



BABY LOCK EVENT

Be a difference *maker*



## DRAWSTRING BACKPACK BAG **SEWING** PROJECT INSTRUCTIONS

**baby lock**

FOR THE LOVE OF SEWING



When we sew together, there's no end to what we can create—or the difference we can make.

# Drawstring Backpack Bag

## SUPPLIES

For Sewing-Only Instructions

Create this fun Drawstring Backpack Bag with or without a pocket with your sewing machine! Make it basic with side seams inside the bag or jazz it up with an exposed seam bound with some pretty bias binding. Add pizzaz with the optional pocket and one of the following embellishments: Ric Rac, Beading, Piping, or your own creativity! Check out what feet and attachments you'll need for your technique. You can even make your own straps with the Adjustable Bias Binder Accessory Foot! Choose between two Drawstring Backpack Bag size options: Child or Teen.

### FOR BAG:

- Sewing Machine and Thread
- Child Size: Two 13" x 16" rectangles of Woven Cotton Fabric
- Teen Size: Two 16" x 19" rectangles of Woven Cotton Fabric
- Fray Check or Fray Block
- Wonder Clips
- Skinny Loop Turner or Needle

### FOR OPTIONAL POCKET:

- **Child Size:** Two 13" x 10" rectangles of Woven Cotton Fabric
- **Teen Size:** Two 16" x 12" rectangles of Woven Cotton Fabric
- 3/8" Elastic – Child Size 10" and Teen Size 12"

#### POCKET TRIM OPTIONS AND ACCESSORY FEET (CHOOSE ONE TRIM OPTION)

- **Child Size:** 18" Cut or **Teen Size:** 21" Cut
- See pocket trims on Pages 3

- Ric Rac - 1/2" Ric Rac Trim with standard sewing foot
- Beading - 1/8" or 3mm Bead Trim with Pearl and Piping Foot ESG-PP
- Piping (purchased) with Pearl and Piping Foot ESG-PP, or Narrow Zipper Foot ESG-ZF, or Adjustable Zipper Foot BLG-AZF
- Piping (make your own) – 1-3/8" bias strip and 1/8" or 3mm piping cord with Pearl and Piping Foot ESG-PP, or Narrow Zipper Foot ESG-ZF, or Adjustable Zipper Foot BLG-AZF

### SIDE SEAMS:

- **For Basic Side Seams** – Nothing extra
- **For Double Fold Bias Bound Side Seams** – Two 30" long 1/2" double fold bias strips (purchased or created) and Adjustable Bias Binder Accessory Foot ESG-ABB

### STRAPS:

#### FOR PURCHASED STRAPS:

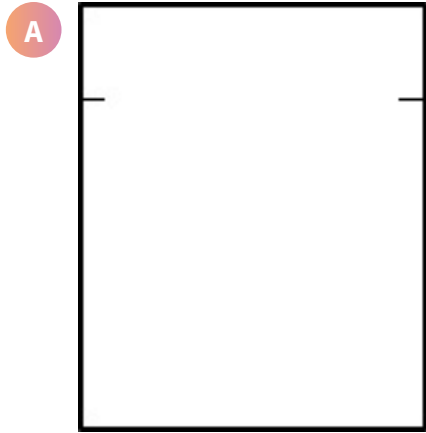
- **Child Size:** 3 Yards or **Teen Size:** 4.5 Yards

#### FOR BIAS STRAPS WITH THE ADJUSTABLE BIAS BINDER FOOT ESG-ABB:

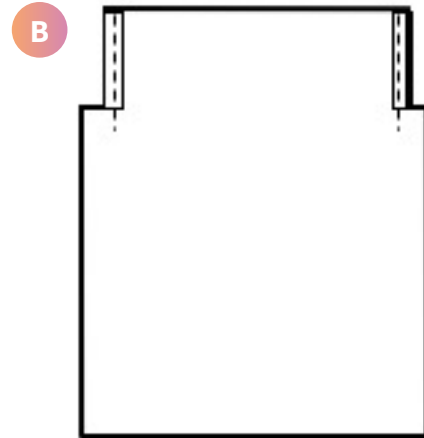
- **Child Size:** At least 3 Yards of (purchased or made) 1/2" double fold bias binding (if making, join bias strips with diagonal seams to create 3 yards or to create two 1.5 yard long pieces)
- **Teen Size:** At least 4.5 yards of purchased\* or made 1/2" double fold bias binding (if making, join bias strips with diagonal seams to create 4.5 yards or to create two 2.25 yard long pieces)

\*If you purchase 1/2" double fold bias binding, you may need to purchase two packages for the teen size if your package is less than 4.5 yards. You'll need 2.25 yards per strap or a total of 4.5 yards.

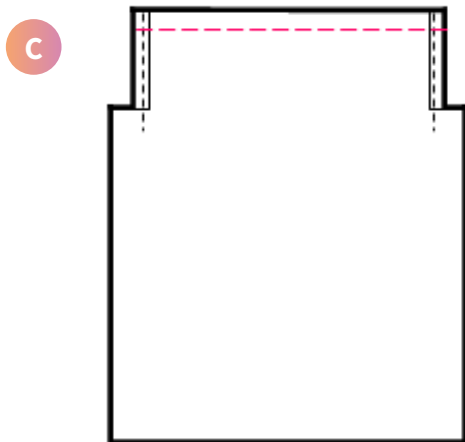
# 1. Casing On The Bag Top - FRONT AND BACK



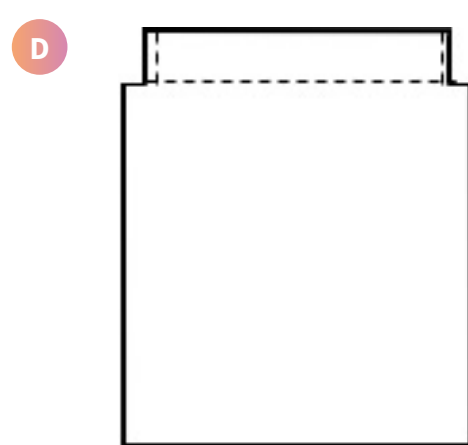
Line the bag front and back up together and clip 2.5" down from the top left and right of the bag, to clip both simultaneously. The clip should be a 1/2" in from each side.



On the bag front and back, roll and press the 2.5" long flaps in twice (to the wrong side) to create approximately 1/4" rolled hem. Topstitch the rolled hem in place with a sewing machine, extending the stitch about a 1/2" below the flap to give this area extra reinforcement.



With an iron, on both the front and back bag pieces, press down (to the wrong side) about a 1/4" along the top of each casing.



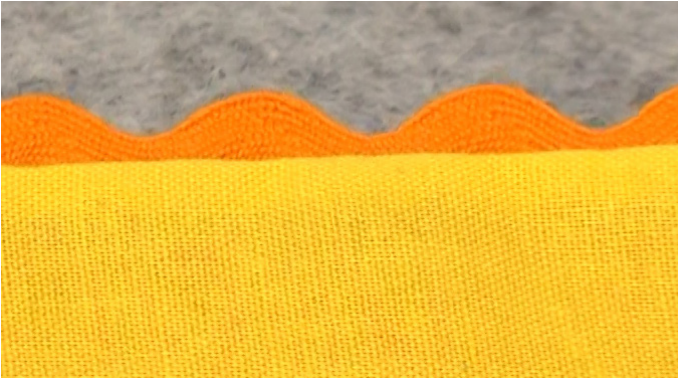
Then, on both casings again, press the folded edge down (to the wrong side) even with the clips. Topstitch the casing near the edge with a sewing machine.

*If you are not adding a pocket, skip to step 4. Lower Bag Seam.*



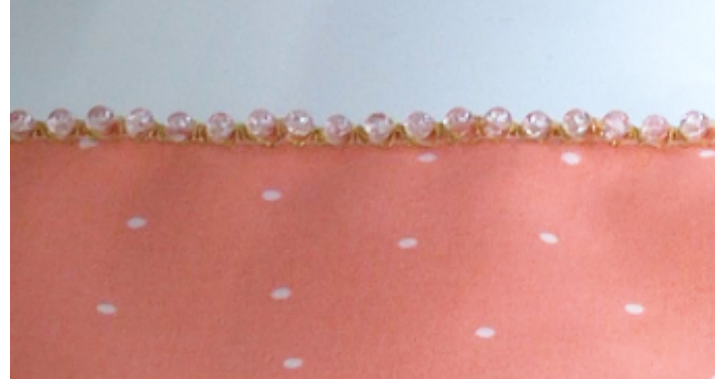
## 2. Pocket Trim OPTIONS

*If you would like to add an embroidered design to the pocket, it's best to add it now before adding your trim.*



### POCKET TRIM OPTION 1: RIC RAC

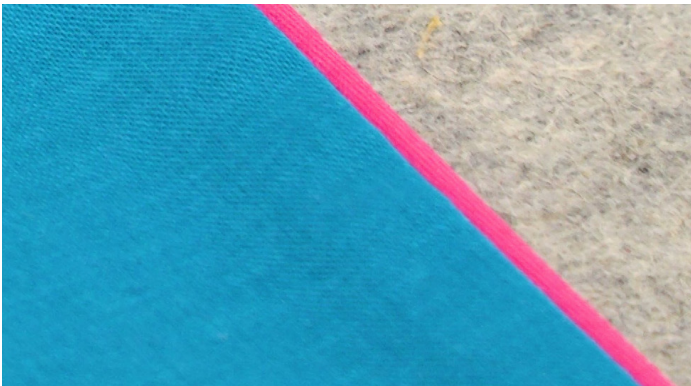
Place Ric Rac in between the top edge of the two pocket layers (right sides together). Stitch with a 1/4" seam allowance. Turn the pocket right sides out and press so that the ric rac is exposed. Now, advance to the elastic casing step. Trim excess ric rac down even with the edge of the pocket.



### POCKET TRIM OPTION 2:

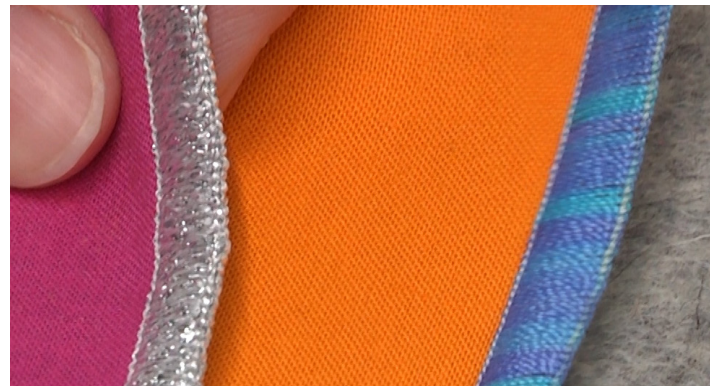
#### BEADING WITH THE Pearl and Piping Foot ESG-PP

Sew upper pocket seam with the two pocket layers right sides together and a 1/2" seam allowance to create the seam on the upper edge of the pocket. Turn right side out and press. Then, place the Pearl and Piping Foot on your machine. Place beading within foot and zig-zag trim into place about 1/4" down from the top edge of the pocket. Check that the zig-zag is wide enough to accommodate the bead trim. Trim the beading down even with the pocket edge after stitching. Bust 2-3 beads with pliers (or the like) on the end of each side of the bead strand within the seam allowance for easy side seam sewing. Now, advance to the elastic casing step.



### POCKET TRIM OPTION 3: PIPING WITH CORDING FOOT

If creating piping, use the Pearl and Piping Foot or the aid of the Narrow or Adjustable Zipper Foot to create piping first. Place piping cord within bias strip and use any of the above three feet above to stitch closely to the piping cord. Place the trim between the two layers of the pocket (right sides together) and stitch with the piping in the groove of the foot or next to the foot (depending on the foot). Turn the pocket right sides out and press so that the piping is exposed. Now, advance to the elastic casing step. Trim excess piping down even with the edge of the pocket.



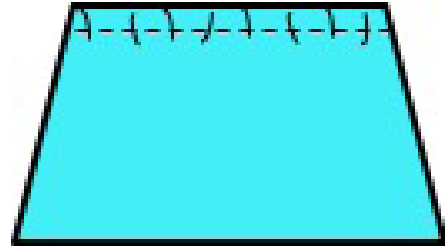
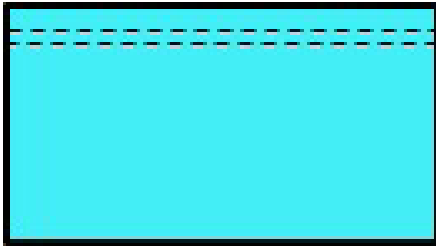
### POCKET TRIM OPTION 4:

#### 3-THREAD WIDE DECORATIVE THREAD

This was a fun trim we did in the serger instructions with decorative thread, but there's so many fun things you can do to add a fun trim even with the sewing machine! Have fun and think outside the box!

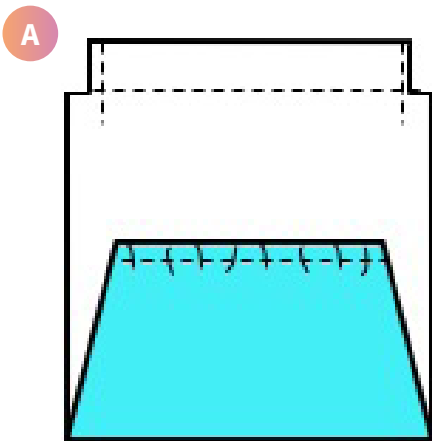


### 3. Elastic CASING

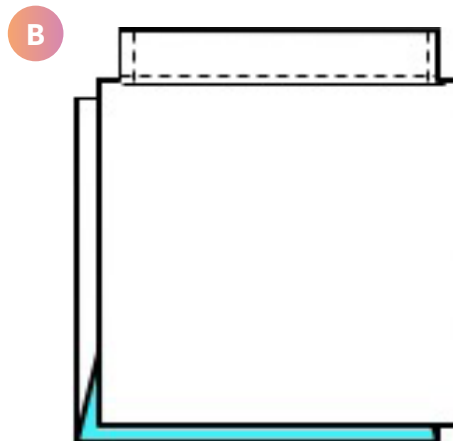


After the trim has been added to your pocket, you'll need to add an elastic casing so that the pocket doesn't hang away from the bag. With the sewing machine straight stitch, topstitch 2 lines to create a 1/2" casing just below your decorative trim. Using a safety pin or skinny loop turner, feed the elastic through, leaving 1" elastic extending on both ends of the casing. Use a straight stitch within the 1/2" side seam allowance and secure elastic in place on the left and right. Pull on both sides to distribute the fabric scrunch evenly. Clip excess elastic even with the edge of the bag.

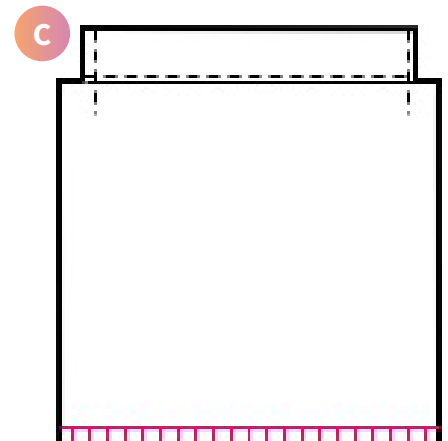
### 4. Lower Bag SEAM



If adding a pocket, align the pocket with the lower edge of the bag front. If necessary, (with sewing machine) baste lower edge of pocket onto lower edge of bag front to hold in place.



With right sides together, align the lower edge of the bag front and back.

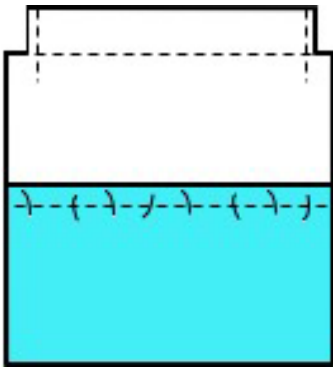


**TO CREATE THE LOWER SEAM ON ALL BAG TYPES,** stitch a 1/2" seam allowance. Finish the raw edge with an overlock stitch on the sewing machine or serger, or use pinking shears. Turn right side out and press lower seam.

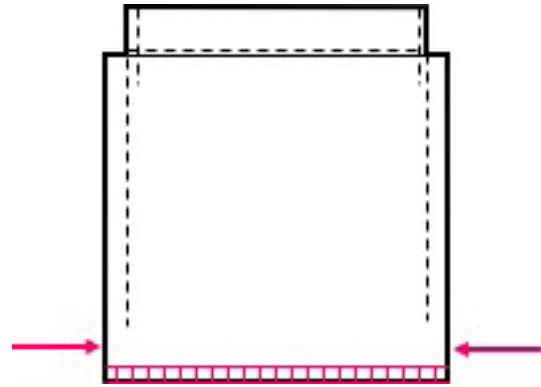


FOR THE LOVE OF SEWING

## 5. *Side* SEAMS

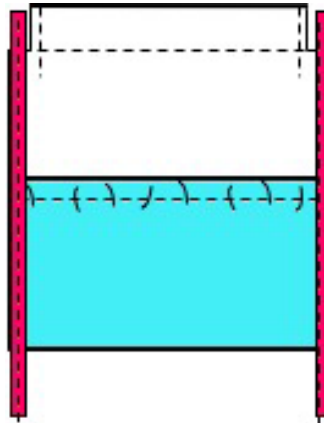


Pin the sides of the pocket so that it aligns with each side seam allowance on the bag front. It is not a bad idea to baste the pocket in place to the bag front with a 1/4" seam allowance with a sewing machine to hold the sides in place.



### **SIDE SEAM OPTION 1: Basic Inside-the-Bag Seams**

If you would just like to keep it very basic and stitch the side seams on the inside of the bag, flip the back to the front again (right sides together) and pin or clip the side seams together using Wonder Clips. Using a sewing machine, stitch both side seams with a 1/2" seam allowance, leaving a 1" opening at the bottom. Turn right side out and skip to Step 6: Straps.



### **SIDE SEAM OPTION 2: BIAS Bound EXPOSED SEAMS**

Create or purchase 1/2" double fold bias tape to use with the Adjustable Bias Binder Foot ESG-ABB. Place binding into the accessory foot (according to the foot instructions). Start stitching onto the bias strip and ensure all is lined up with the needle. When ready, place one of the side seams into the groove in the attachment and stitch the bias binding along each exposed side seam. Try to have 3" of stitched bias tail above the side seam and 10" below the side seam. Fold the top edge into the bag and topstitch over the seam/bias trim on each side to reinforce this area and to secure the bias tail inside the bag (clip excess inside).

---

## 6. Straps

---

If you purchased pre-made straps, skip to below where it says **FOR ALL STRAPS (purchased or created)**. If you are making straps with the double fold bias binder straps, make sure to join bias strips with diagonal seams to create the length needed for each strap (at least 81" each, extra length is always nice to have when using the binders and can be cut down).



### **DOUBLE FOLD BIAS BINDER STRAPS**

To create your own straps with the Double Fold Bias Binder Straps, place the Adjustable Bias Binder Foot ESG-ABB on your machine! Place the purchased or created 1/2" Double Fold Bias Binding into the attachment and stitch the entire long strap. Either stitch one really long strap about 4.5 yards long and cut into two or make sure each strap is a minimum of 81".

**FOR ALL STRAPS (PURCHASED OR CREATED)**, cut the long strap in half. Child Size should be about 54" each and Teen Size should be about 81" each. Leave them a little longer if you plan on tying and leaving a little extra (like tassels). You may need less if you are just stitching the very basic seam-inside-the-bag style.

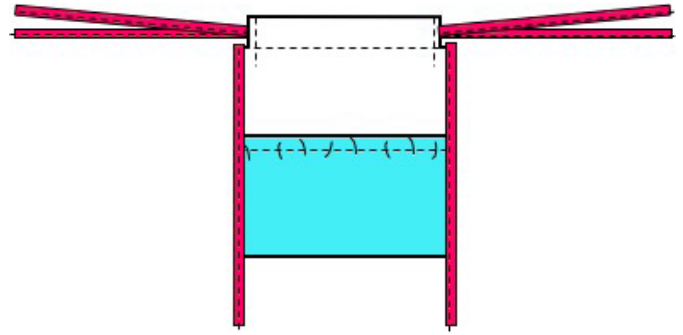


**FOR THE LOVE OF SEWING**

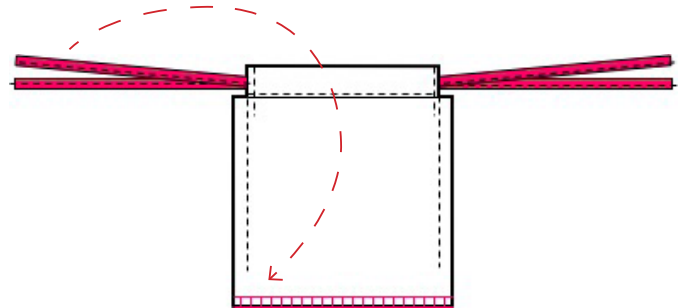


## 7. Inserting STRAPS

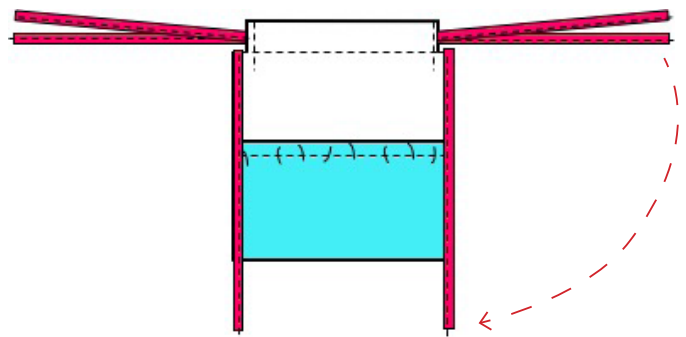
Bag should be right side out. Use a skinny loop turner (recommended) to pull the straps through or a safety pin to feed the straps through each casing. Starting on the left side of the bag, insert one strap through the bag front casing at the top and then, feed it through the back side. You should have two tails coming out of the left side (the two tails should be from the same strap). Repeat on the right side of the bag, feeding through the front casing and then, through the back casing, leaving two strap tails to the right of the bag (these two tails should also be from the same strap). You should have two tails on each side now.



**IF YOU SEWED THE SIDE SEAMS INSIDE THE BAG (BIAS BOUND BAGS, GO TO THE NEXT STEP),** make sure the casing is smooth/flat and clip the straps down to where they extend 15" (for Child Size) or 18" (for Teen Size) out from each side of the casing. Flip the bag wrong side out again. Pull the straps on the left together, untwisted, and into the left lower corner opening of the bag and pin in place. Repeat with the straps on the right. Stitch in place with a sewing machine and close the opening in the side seam completely. Finish side seams with a serger, overcasting stitch, or pinking sheers.



**IF YOU BOUND THE SIDE SEAMS:** With the casing smooth/flat, tie all straps together in a knot right at both corners of the bag, ensuring that there's about 15" (for Child Size) or 18" (for Teen Size) of strap from flat (not scrunched) casing to knot. Clip straps at desired length (either with a 1/2" clip below the knot or leave a little tassel – use Fray Check or Fray Block on the cut threads on the bias tails).



*For other exciting projects like this one, visit Baby Lock at [www.babylock.com](http://www.babylock.com).*

*©2021 Baby Lock USA. This project may be freely used by individuals for non-commercial purposes. Project instructions may not be sold or distributed without approval from Baby Lock. Baby Lock must be acknowledged as the source of the project instructions through copyright or online link.*